

Your Community - Your Church!



www.stannesaigburth.com



@StAnnesAigburth



INTERNAL VIEW

An update and how you can help

Lets say together our prayer for the project

Dear Lord,

We give thanks for Your goodness. We pray for Your guidance, wisdom and provision as we embark on this exciting new project - 'Space2Grow'

Give us courage to step out in faith, a boldness to give and a hunger to see Your church transformed, that St. Anne's will truly be a 'Space 2 Grow' in faith! Amen

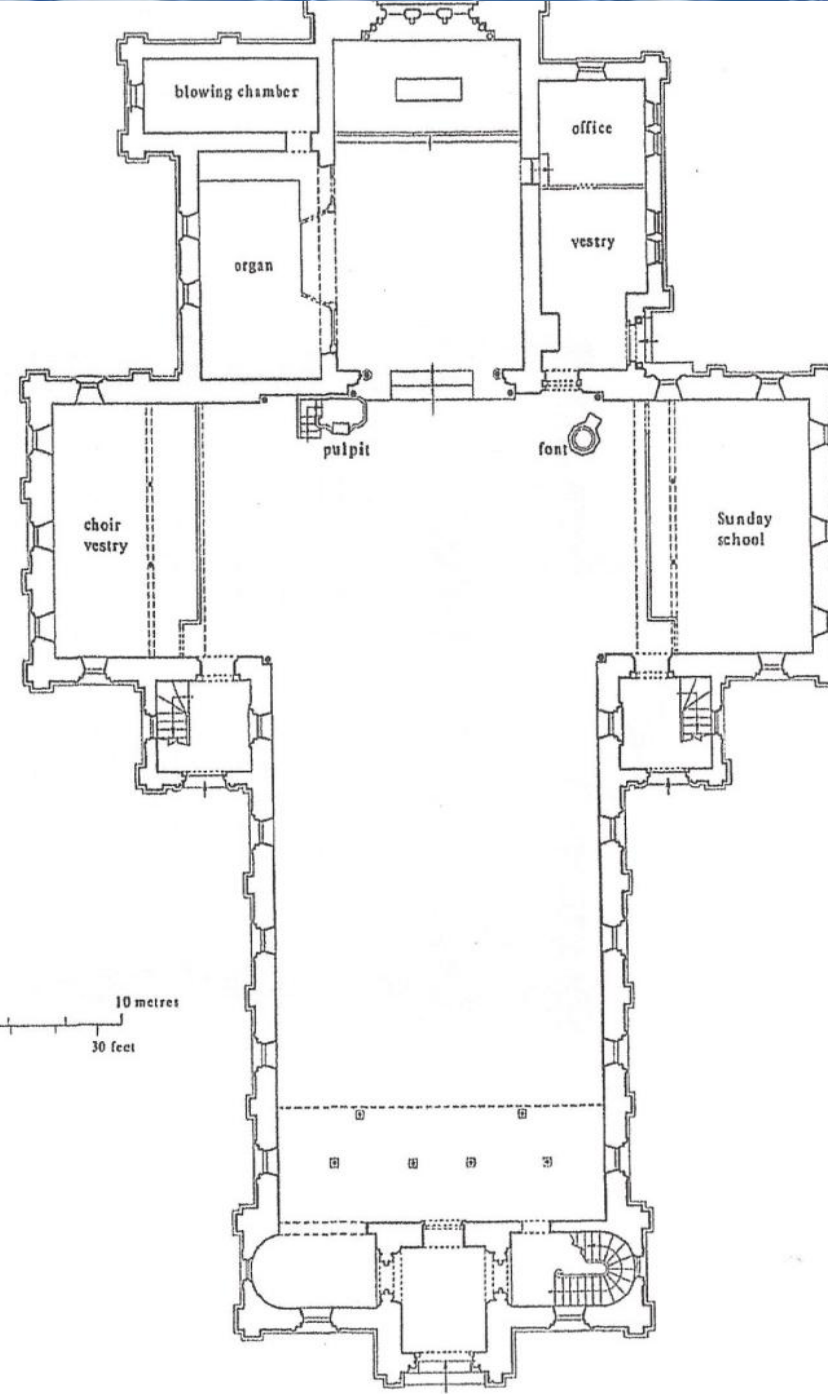
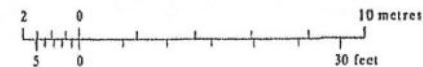
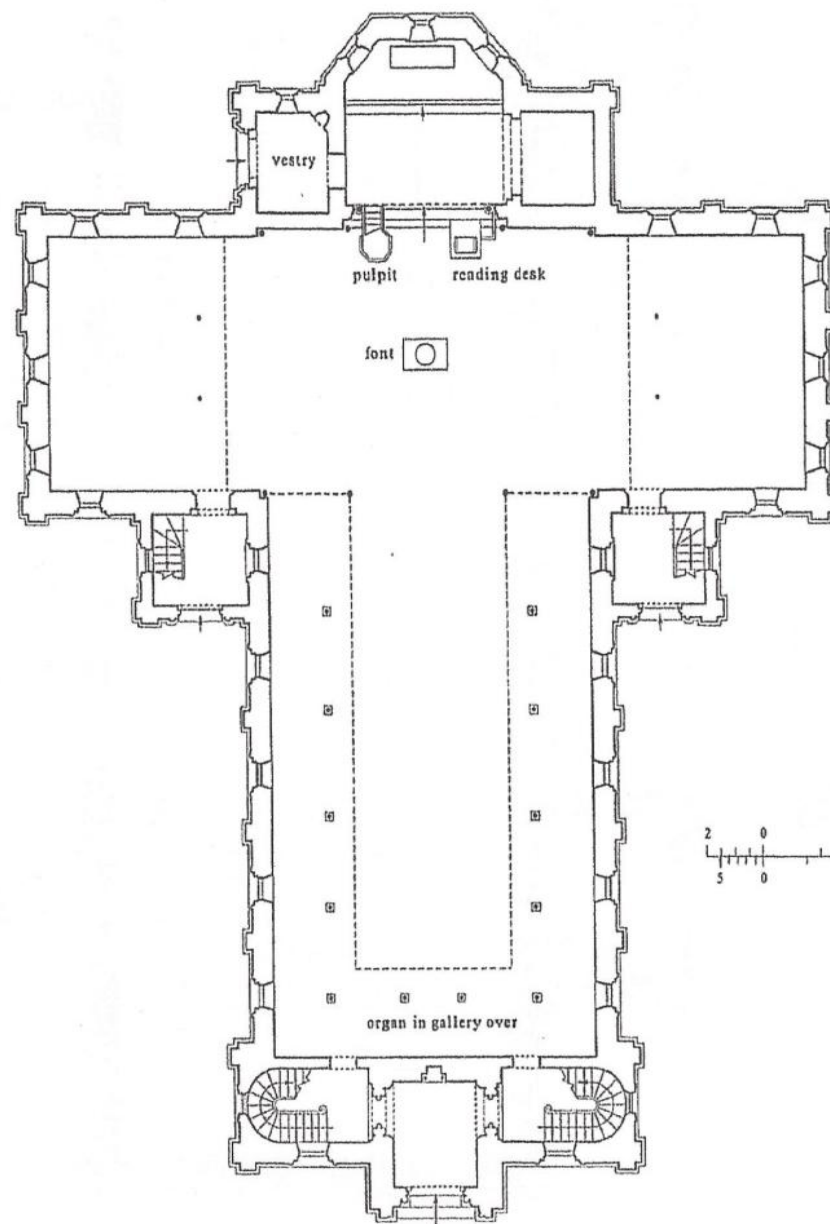
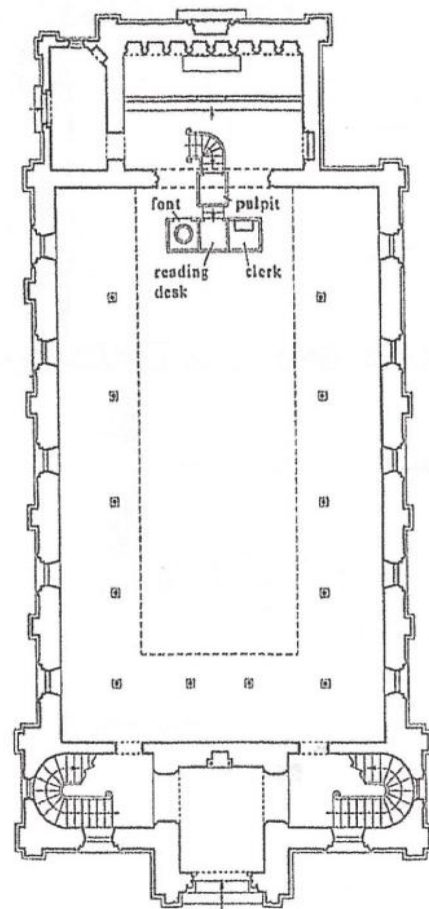
The vision

We are seeking to re-order the church and develop its facilities so that it can truly be a place where people can worship in a modern setting, where we can also offer a truly flexible space, equipped with modern A/V and PA systems, meeting spaces, catering facilities. Ultimately a building where the community can gather in a setting that is fit for the modern age.

PARISH CHURCH OF SAINT ANNE, AIGBURTH, LIVERPOOL



ENGLISH HERITAGE



- How much will the work cost?
 - £750,000.
- When will the work start?
- (According to Ian Crowe)
 - January 2020
- In 672 days time
 - (22 months)

Funding Targets

• Grants	£280,000
• Congregation	£200,000
• Parish residents	£10,000
• Parish Businesses	£20,000
• Fund raising	£240,000
• Total	£750,000

£200,000 from you?

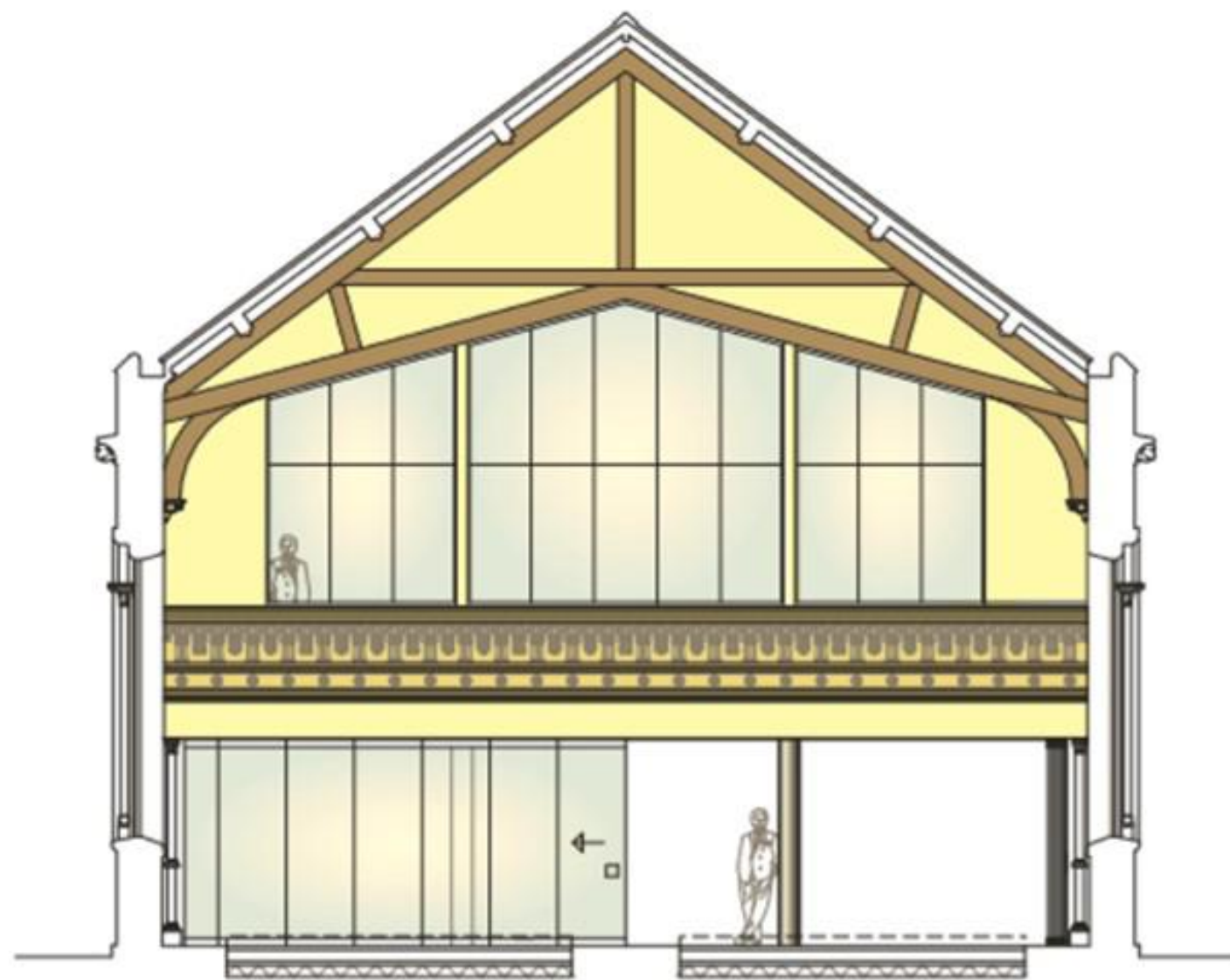
How?

- If 10 people give £100 a month for 22 months = £22,000
- If 20 people give £50 a month for 22 months = £22,000
- If 60 people give £40 a month for 22 months = £52,800
- If 40 people give £30 a month for 22 months = £26,400
- If 50 people give £25 a month for 22 months = £27,500
- A total of £150,700
- If its gift aided £37,675
- **Grand total of £188,375** (Shortfall of £11,625)

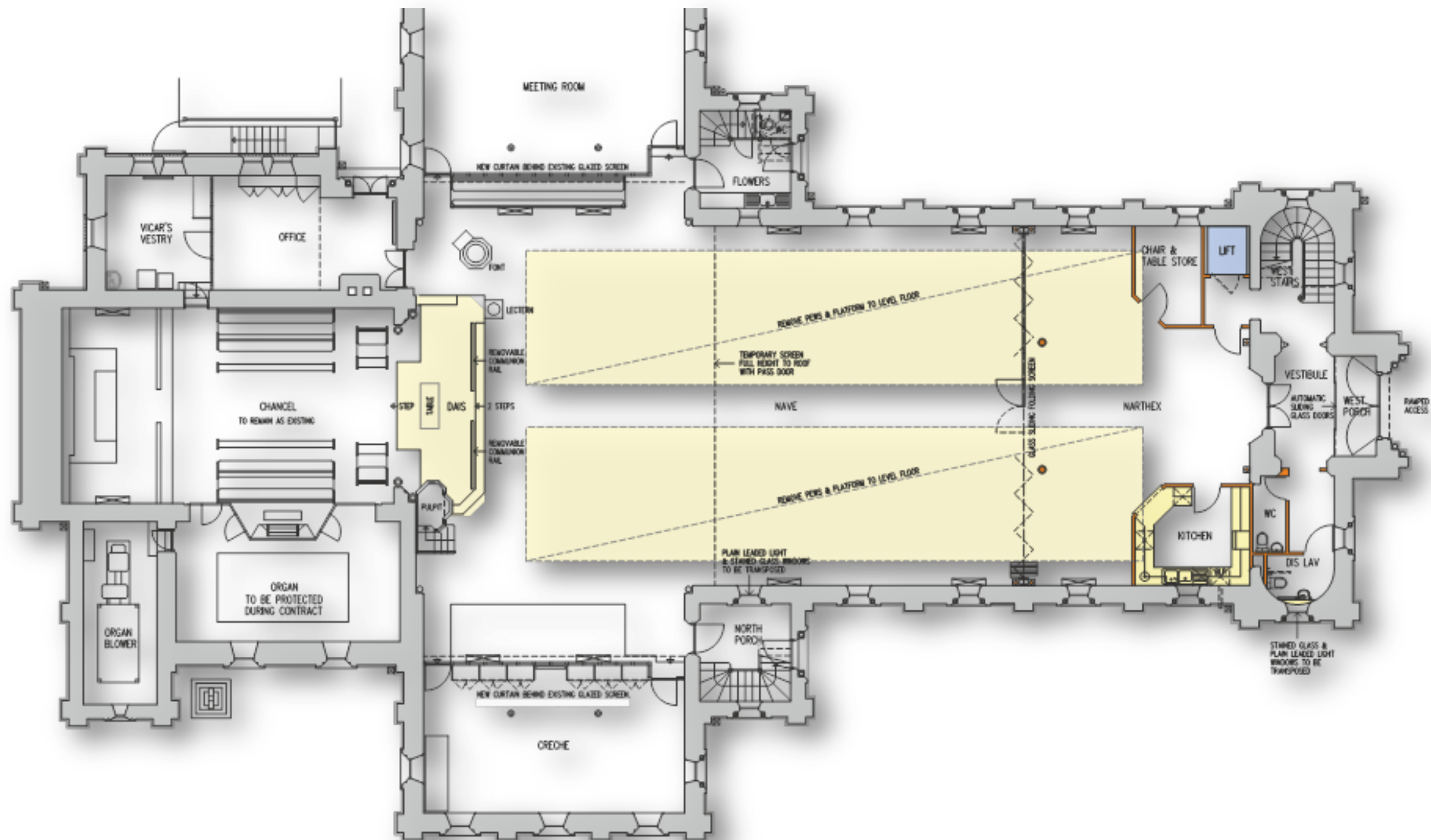


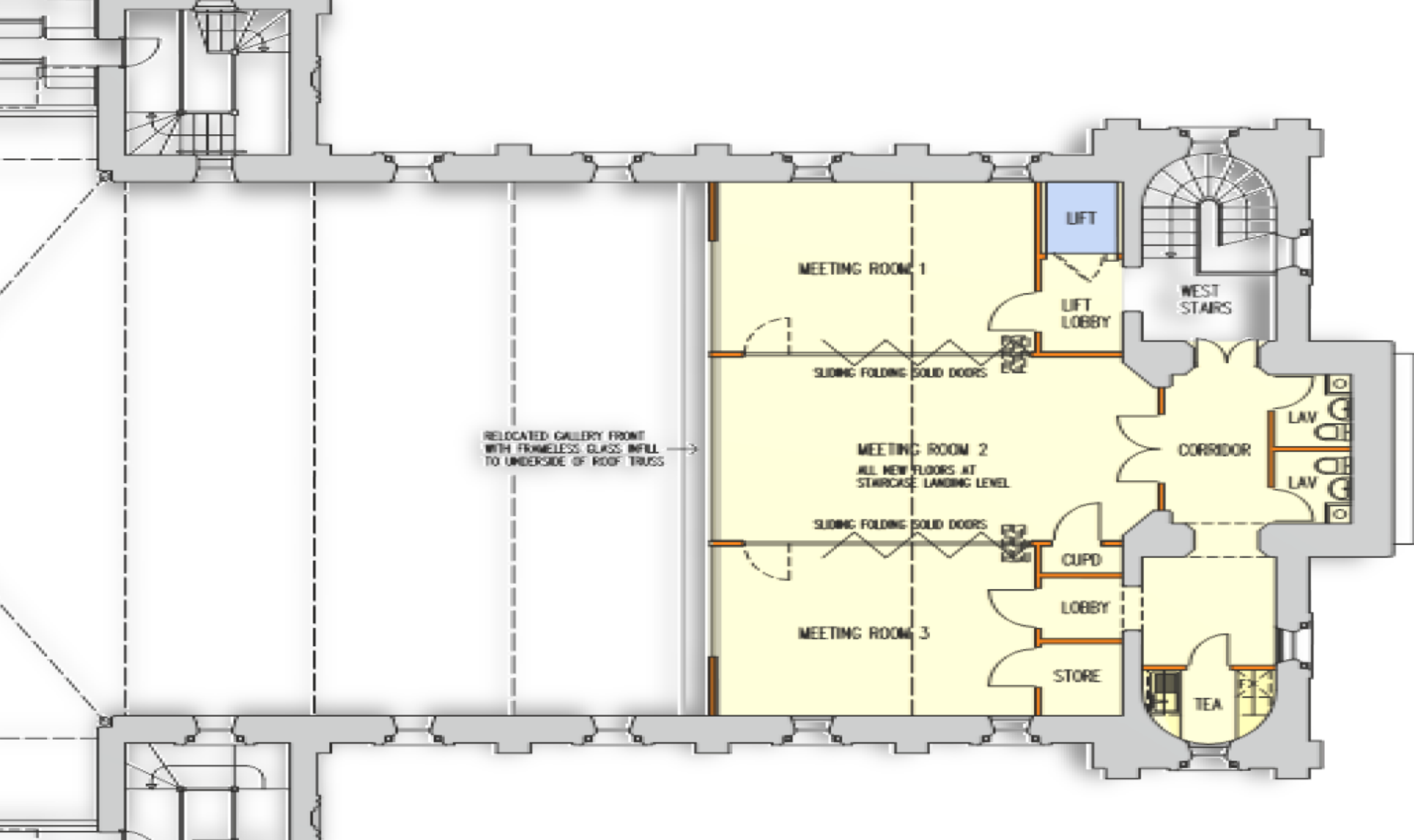
Youth groups
Community Groups
Finance/debt advice
Legal advice
Counselling groups
Fitness
Lunch clubs
School use
Café

‘A Bigger Church making a bigger difference’



CROSS SECTION THROUGH NAVE LOOKING WEST





- **Prayers** - We believe prayer is vital in all things. Please pray for this project. Our Space 2 Grow prayer is available to view on the website
- **Pledging** - Could you pledge a set amount of money over a set period of time? Forms are available to download from our website
- **Participation** - we are looking for people to take part in (and organise) fundraising activities from Coffee mornings to marathons!
- **Promotion** - Could you involve others? Would your business be interested in getting involved?

The questions for today

1. How can you help raise funds?
 1. Your ideas for fund raising?
 1. What do you think are the advantages of removing the pews?
 2. Joining one of the teams raising funds (grants/fundraising/
funding from businesses)